



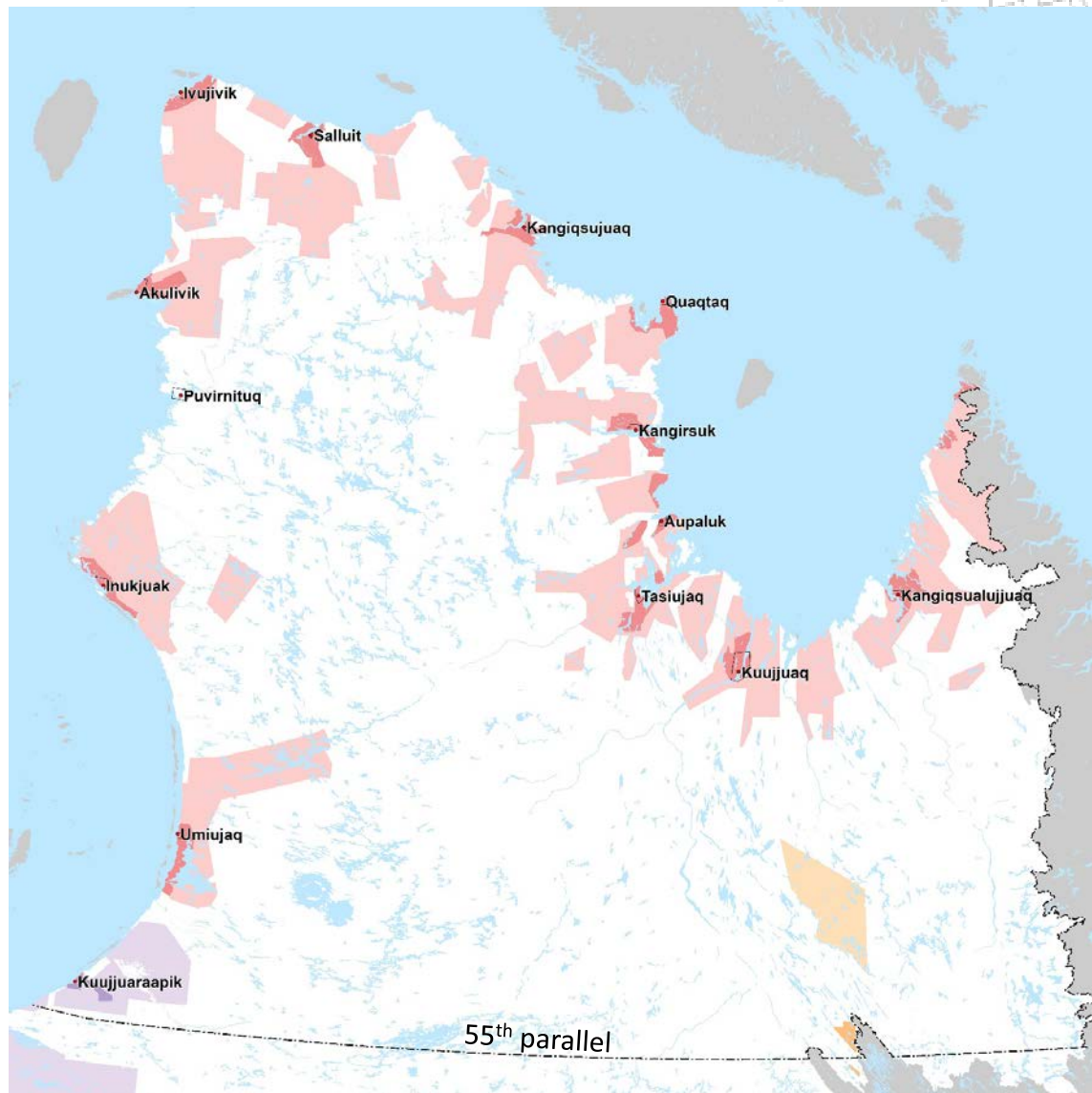
Integrating Climate Change Hazard Mapping into Community Plan



8 March 2017

Maxime Paquet Geomatics Specialist,
Renewable Resources, Environment, Lands
and Parks

Tina McCallum Land Use Planner,
Renewable Resources, Environment, Lands
and Parks



Administration of Québec
land north 55th parallel:

14 Northern Villages

Around 507 000 km²



Land-Use Planning Section Mandate



Provide training and technical assistance to the Northern Villages' municipal employees and elected members



Help design tools to improve planning at the community and regional levels

Salluit October 10th , 2009
High water level



Salluit October 10th , 2009
Damage caused by the storm surge and waves



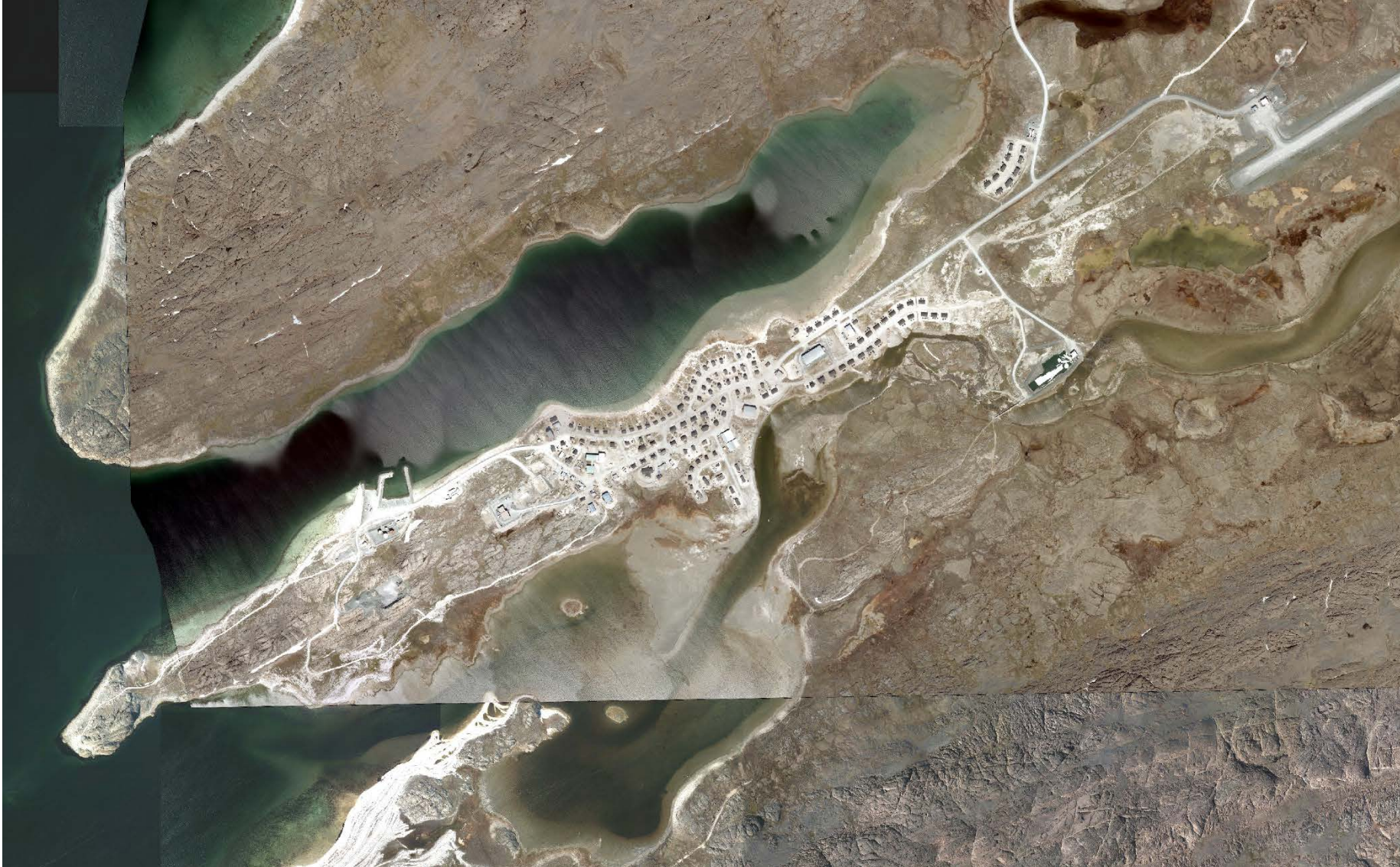
Climate change has measurable impacts: permafrost melting, flooding and shoreline erosion and temperature increases have had a significant impact on the development of communities and their development plans



Climate Change Impact



Integrating Climate Change : Akulivik Case



NORTHERN VILLAGE OF AKULIVIK MASTER PLAN

BY-LAW NO. _____

Our Vision

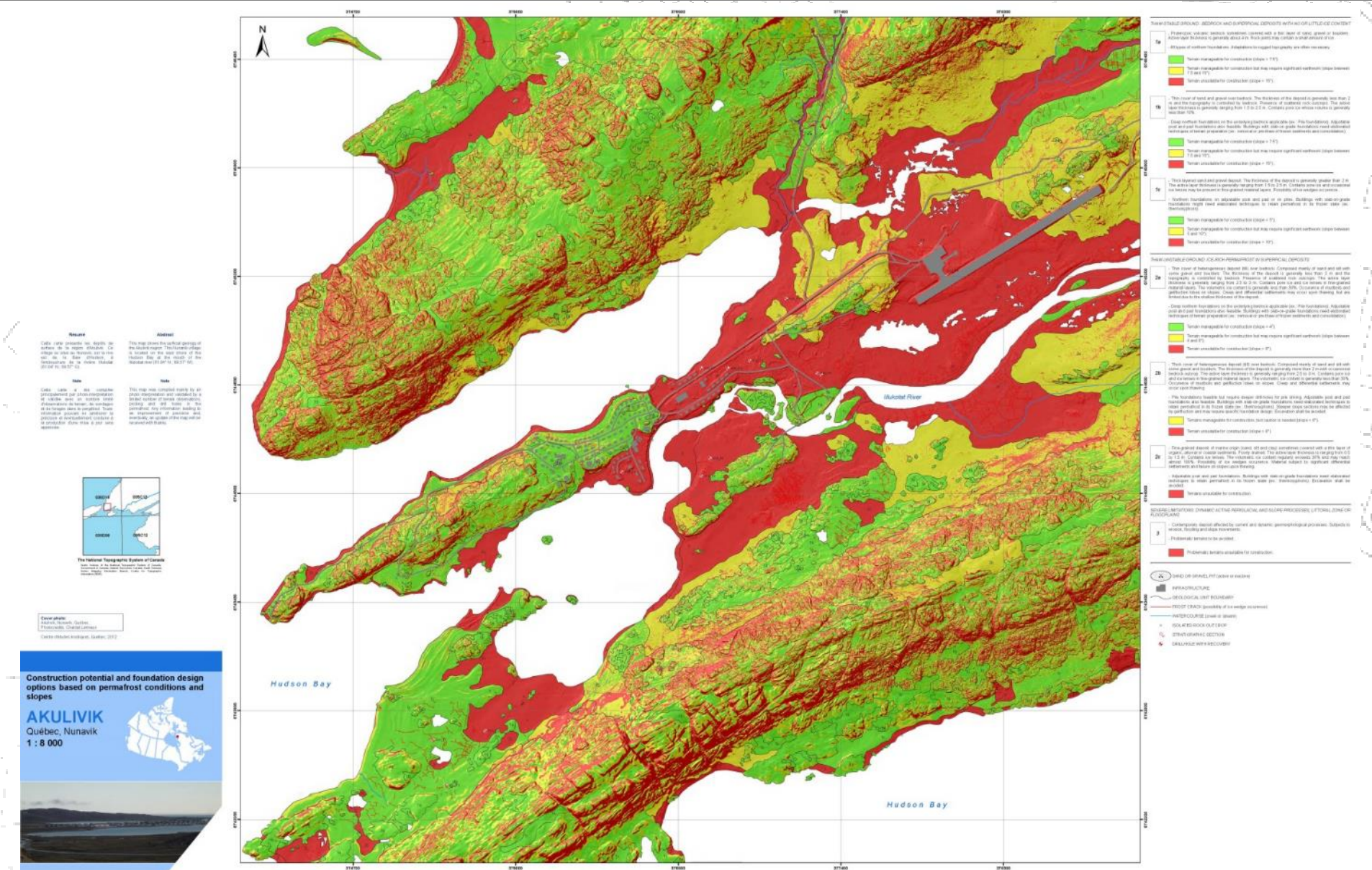
Residents of Akulivik in 2035 will continue to have access to our beautiful beaches and plentiful hunting and fishing areas. Our children will have everything we have including housing, a clean environment, and job opportunities.



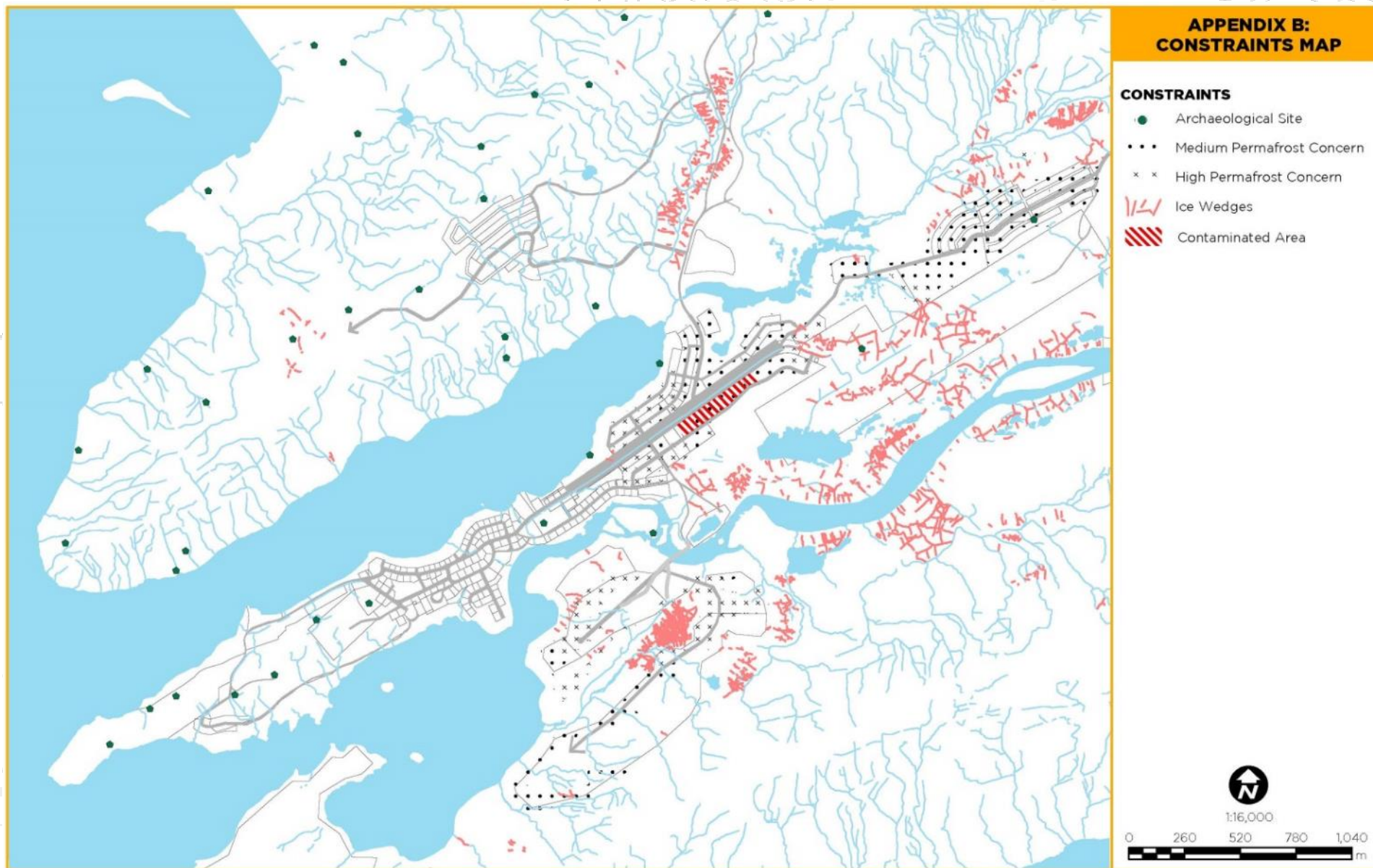
NORTHERN VILLAGE OF AKULIVIK ZONING BY-LAW

Vision 2035

Residents of Akulivik in 2035 will continue to have access to our beautiful beaches and plentiful hunting and fishing areas. Our children will have everything we have including housing, a clean environment, and job opportunities.



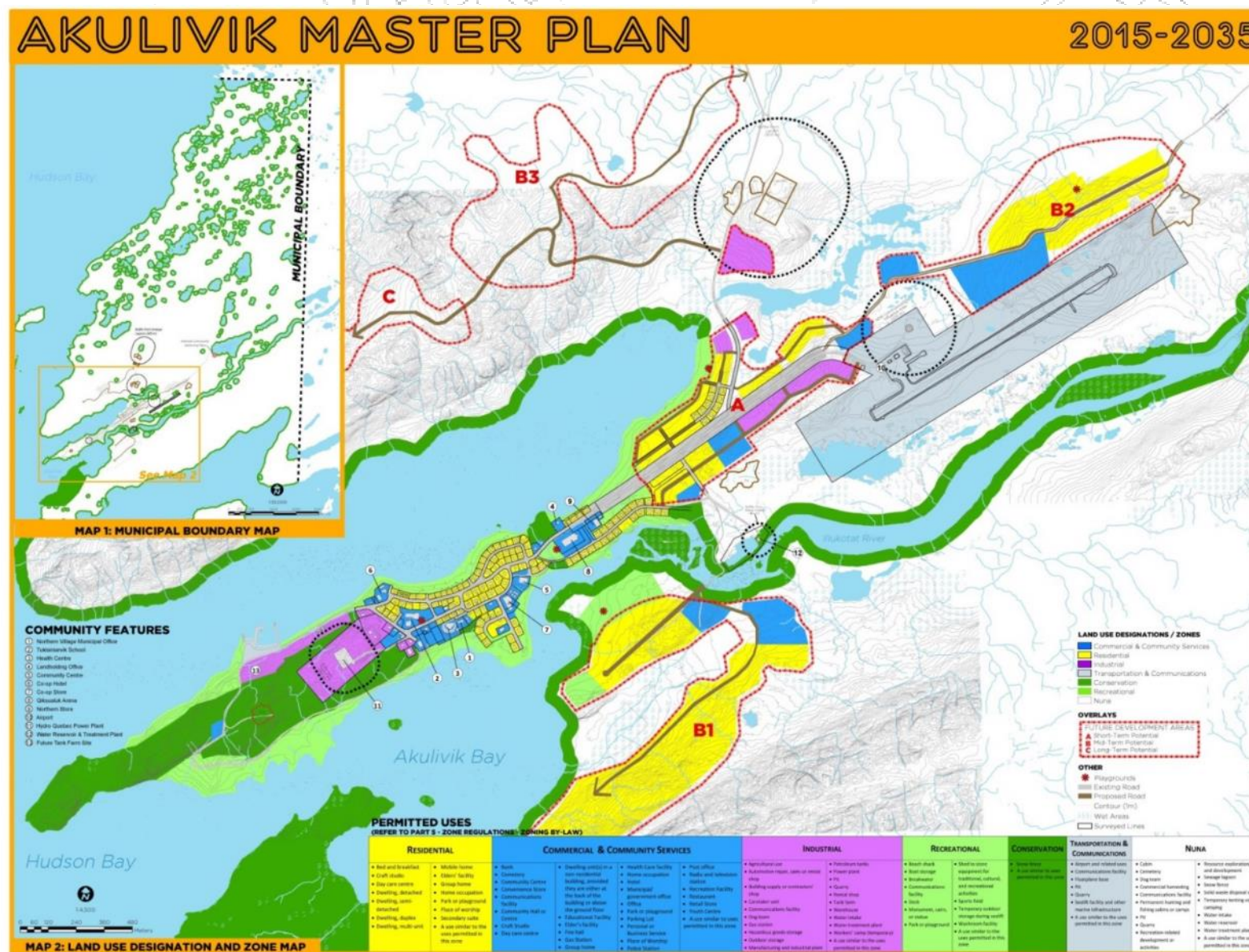
Integrating Climate Change : Akulivik Case



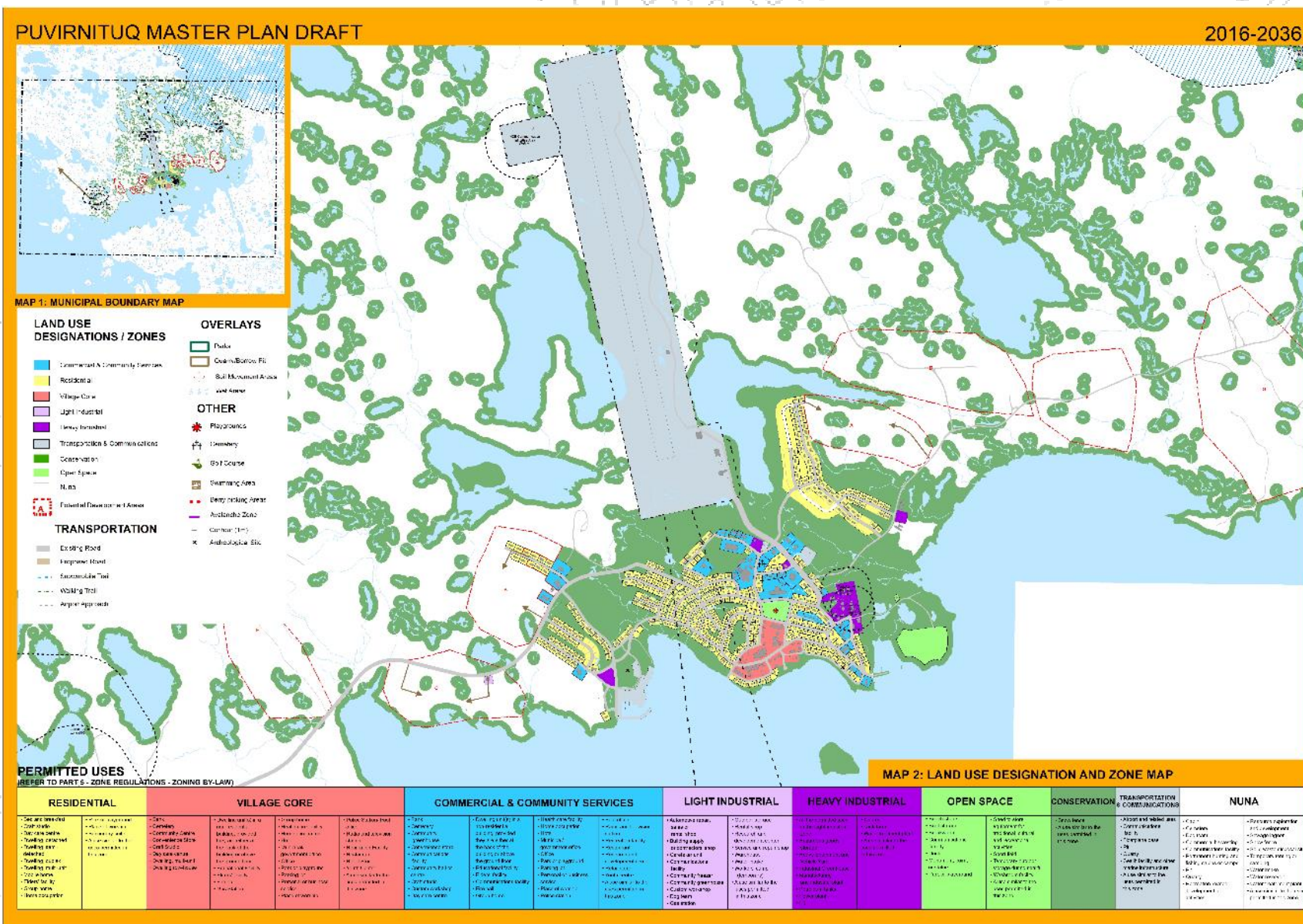
Poster plan

Shows the major assignments of the territory such as:

- Land-use designations
- Areas of interest
- Natural hazards
- Areas for future development



Next Step : Puvirnituk Case



Next Step : Puvirnituk Case

Résumé

Cette carte présente les aléas naturels actuels et appréhendés en la région de Puvirnituk. Ce village se situe au Nunavut, sur la rive est de la baie d'Umanak, à l'embouchure de la rivière Puvirnituk (65°05' N, 17°22' W).

Note

Cette carte a été compilée principalement par photo-interprétation et validée avec un nombre limité d'observations terrain, de sondages et de données dans le passé. Toute information pouvant être utilisée à l'élaboration et à l'actualisation de la carte sera prise en compte.

Les données terrain sont représentées par un symbole spécial, isolé ou groupé, en fonction de leur échelle et de leur importance.

Abstract

This map shows the actual and potential hazards of the Puvirnituk region. This Nunavut village is located on the east shore of the Hudson Bay at the mouth of the Puvirnituk river (65°05' N, 17°22' W).

Note

This map was compiled mainly by air photo interpretation and validated by a limited number of terrain observations, probing, and soil tests in the past. Any information leading to an improvement of precision and, eventually, an update of the map will be included with thanks.

Natural hazards were presented according to their scale and generally grouped, alone or jointly.

Carte de référence



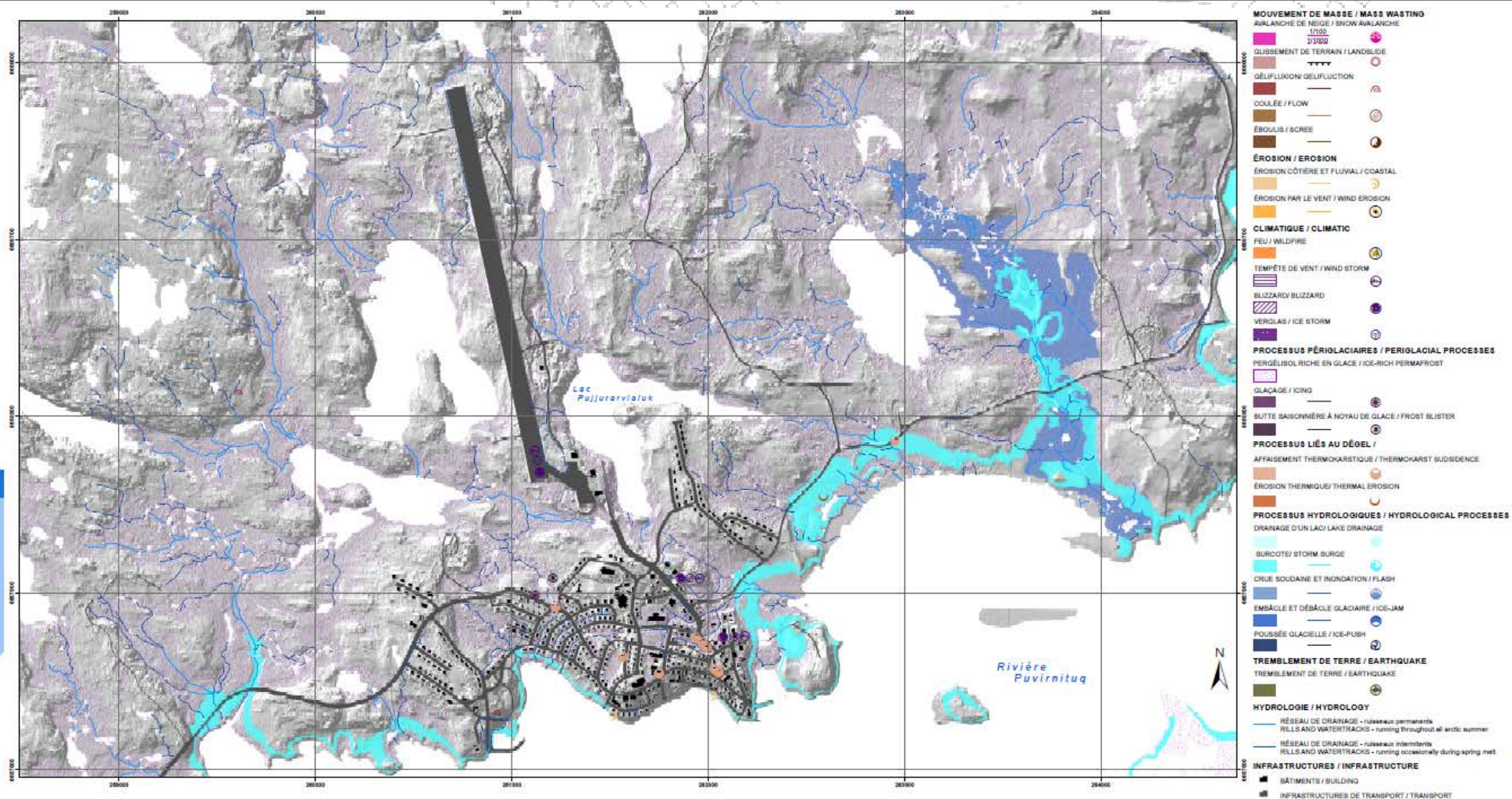
Le système national de référence cartographique du Canada (NAD83) est utilisé pour la projection et le datum.

Illustration de couverture / Cover illustration:

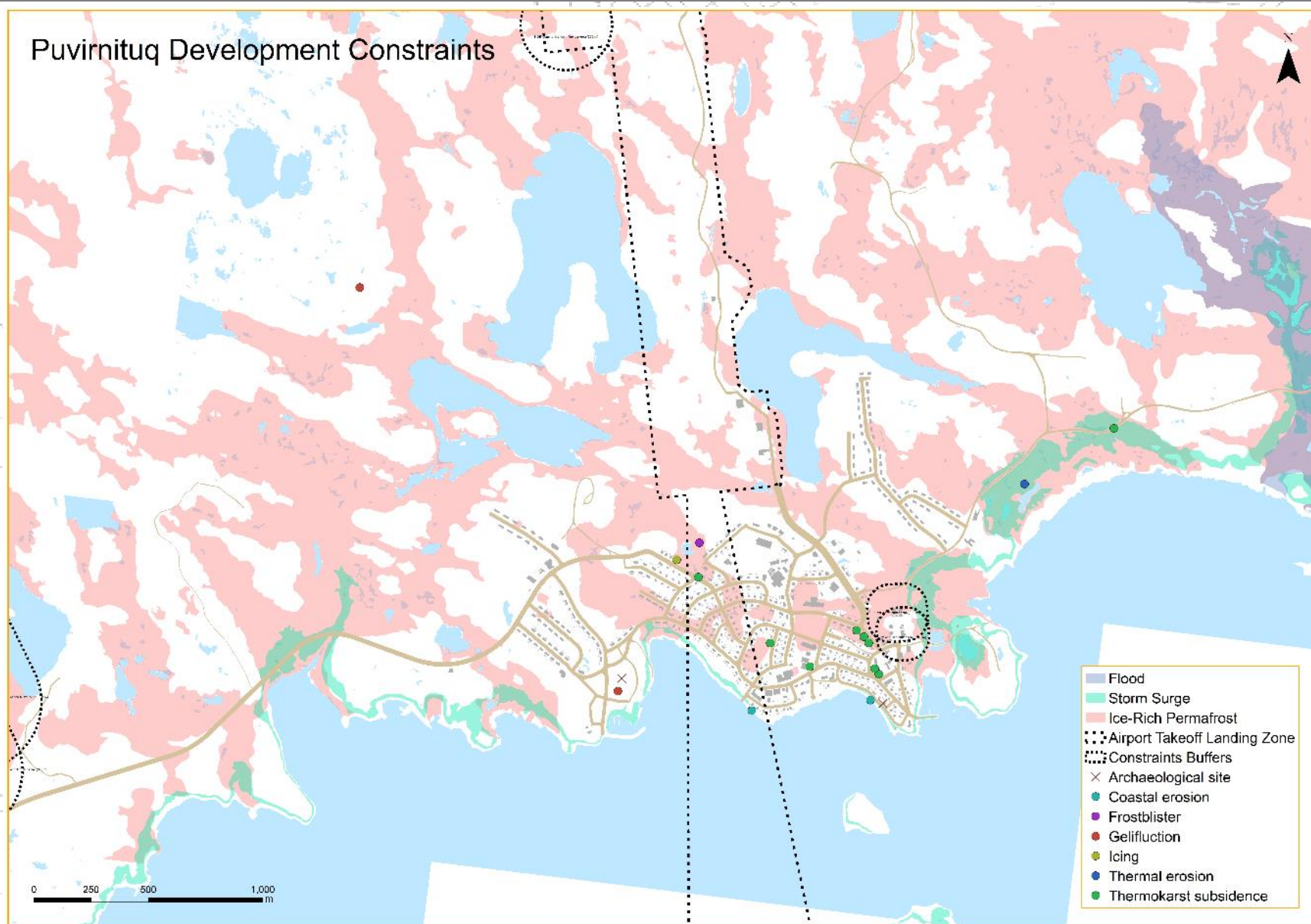
Puvirnituk, Nunavut, Québec. Photographée par l'hydrologue Chantal Lanthier.

Centre d'études nordiques, Québec, 2016

ALÉAS NATURELS ACTUELS ET APPRÉHENDÉS
ACTUAL AND POTENTIAL NATURAL HAZARDS
PUVIRNITUQ
 Québec, Nunavik
 1 : 10 000

Next Step : Puvirnitug Case





Nf3ü4

Thank You

To contact us:

LANDUSE@KRG.CA